

Arizona evolution

One-piece, steel shell, forced draught, boilers

Arizona Evolution boilers use reverse flame combustion chamber technology to achieve outstanding performance. Developed specifically for the public and commercial sectors, the boilers compact dimensions mean it can be easily and quickly installed. All models are suitable for use with oil, gas or kerosene and meet the requirements of the latest Building Regulations for both mains gas and off-gas applications.



Features

Fully matched oil and gas burners

Fully integrated control system

Insulated casing panels

Lifting eyes

Benefits

For different fuel options

Ensures optimum performance is maintained

Helps to reduce heat lost and maintain efficiency

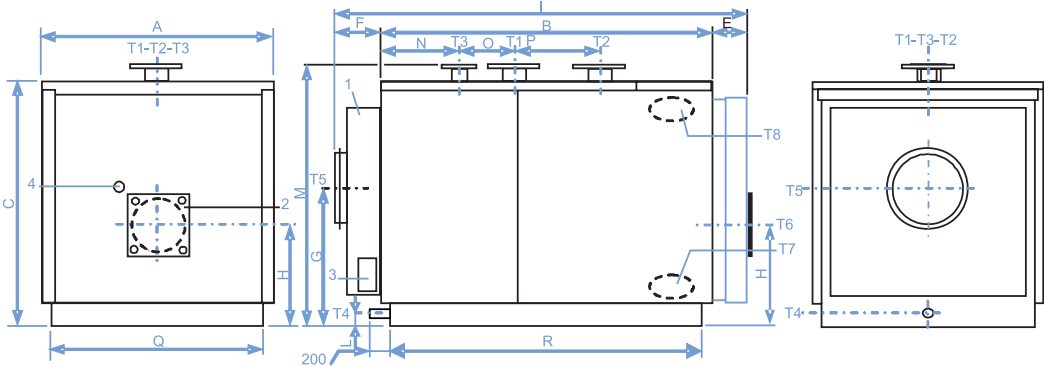
Making it easy to lift and position

Specification

Performance	Fuel Type	Arizona 1320	Arizona 1570	Arizona 1850	Arizona 2200	Arizona 2650	Arizona 3000	Arizona 3500	Arizona 4000
Output @ 80 / 60°C	kW	1320	1570	1850	2200	2650	3000	3500	4000
Input (NCV) Maximum	kW	1442	1715	2020	2400	2890	3280	3825	4371
Efficiency									
	Value %								
Efficiency @ 80 / 60°C - 100% Load	% Gross	82 Gas / 84 Oil							
Efficiency @ 50 / 30°C - 30% Load	% Gross	82 Gas / 84 Oil							
Current Building Regulations - Part L2 Seasonal Efficiency	% Gross	82 Gas / 84 Oil							
Gas									
Gas Consumption (Natural Gas)	m³/h	148.9	177.1	208.6	247.9	298.4	338.8	395.1	451.5
Oil Consumption (Heating Oil - 35 sec)	Kg/h	134.4	159.9	188.3	223.7	247.0	305.8	356.6	407.5
Inlet Gas Pressure (Natural Gas-G20)	m/bar	Dependent on burner specified							
Gas Connection Size	inch	Dependent on burner specified							
Gas Connection Type		Dependent on burner specified							
Flue									
Flue Gas Volume @ 80/60°C (NG)	kg/hr	2167	2577	3036	3607	4344	4930	5754	6570
Flue Gas Temperature (NG)	°C	166	165	166	164	163	167	167	166
Flue Gas Volume @ 80/60°C (Oil)	kg/hr	2208	2626	3093	3675	4425	5022	5861	6693
Flue Gas Temperature (Oil)	°C	179	177	178	176	175	180	180	179
Hydraulic									
Water Flow Rate @ 15°C ΔT	l/s	21.1	25	29.5	35.1	42.3	47.8	55.8	63.8
Hydraulic Resistance @ 15°C ΔT	kPa	3.43	3.23	4.41	3.33	4.7	6.1	8.23	8.33
Water Content	Litres	1242	1418	1617	2086	2324	2667	4142	4455
Flow & Return Connection Size	mm	DN150	DN175	DN175	DN200	DN200	DN200	DN200	DN250
Flow & Return Connection Type		PN16							
Flue Connection Size	mm	400	450	450	520	520	570	620	620
Max Boiler Operating Pressure	bar	6	6	6	6	6	6	6	6
Min Boiler Operating Pressure	bar	1	1	1	1	1	1	1	1
Maximum Flow Temperature	°C	90							
General									
Appliance Dry Weight	Kg	2030	2780	3280	4145	4465	5110	6700	7500
NOx Level (Dry @ 0% O2)	mg/kWh	Dependent on burner specified							
CO2 Content – Natural Gas	%	9-9.5							
CO2 Content – LPG	%	12-13							
Noise Levels @ 1 metre from unit	dB(A)	Dependent on burner specified							
High Level Ventilation* (BS 6644)	cm²	2884	3430	4040	4800	5780	6560	7650	8724
Low Level Ventilation* (BS 6644)	cm²	5768	6860	8080	9600	11560	13120	15300	17484
Electrical									
Power consumption	W	Dependent on burner specified							
Nominal supply voltage	V / Hz	Dependent on burner specified							

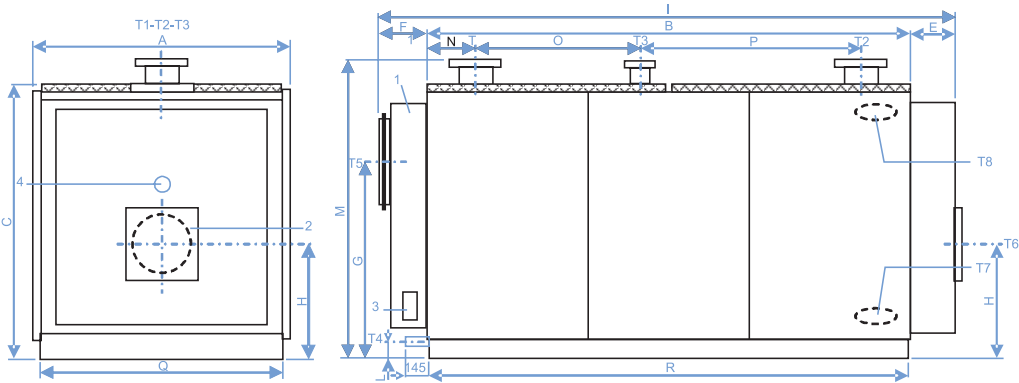
Dimensions

Arizona Evolution, 1320 to 2650kW



- 1 Removable Flue Box
- 2 Burner Adaptor Plate
- 3 Clean-out Door
- 4 Sight Glass
- T1 Flow
- T2 Return
- T3 Safety Valve
- T4 Drain 1½"
- T5 Flue Spigot
- T6 Burner Position
- T7 Sludge Drain
- T8 Inspection Hole

Arizona Evolution, 3000 to 3500kW



- 1 Removable Flue Box
- 2 Burner Adaptor Plate
- 3 Clean-out Door
- 4 Sight Glass
- T1 Flow
- T2 Return
- T3 Safety Valve
- T4 Drain 1½"
- T5 Flue Spigot
- T6 Burner Position
- T7 Sludge Drain
- T8 Inspection Hole

	A	B	C	E	F	G	H	I	L	M	N	O	P	Q	R	T1	T2	T3	T4	T5	T6
Arizona 1320	1352	2292	1432	207	187	810	595	2686	180	1540	461	670	500	1250	2186	150	150	80	1 1/2"	400	320
Arizona 1570	1462	2282	1542	227	272	880	640	2781	75	1650	561	510	550	1360	2176	175	175	100	1 1/2"	450	320
Arizona 1850	1462	2652	1542	227	272	880	640	3151	75	1650	561	880	550	1360	2546	175	175	100	1 1/2"	450	320
Arizona 2200	1622	2692	1702	259	274	950	690	3225	75	1810	661	670	700	1520	2590	200	200	125	1 1/2"	520	380
Arizona 2650	1622	3014	1702	258	273	950	690	3545	75	1810	662	990	700	1520	2910	200	200	125	1 1/2"	520	380
Arizona 3000	1720	3230	1830	295	310	1315	772	3835	115	1990	325	1100	1330	1620	3200	200	200	125	1 1/2"	570	380
Arizona 3500	1970	3194	2090	325	360	1535	915	3879	144	2271	377	1060	1280	1870	3164	200	200	125	1 1/2"	620	400
Arizona 4000	1970	3594	2090	325	360	1535	915	4279	144	2271	777	1060	1420	1870	3564	250	250	125	1 1/2"	620	400



RS 33961



sales 0345 070 1055

technical 0345 070 1057

web pottertoncommercial.co.uk

A Baxi Heating Brand

Registered office address: Baxi Heating UK, Coventry Road, Warwick, CV34 4LL

May 2017